

SIZE: 150 x 50 MM

TYPHOON Wizard Calibration Instruction

When the 'Point to fly' function does not work properly, please calibrate the TYPHOON Wizard as follows:

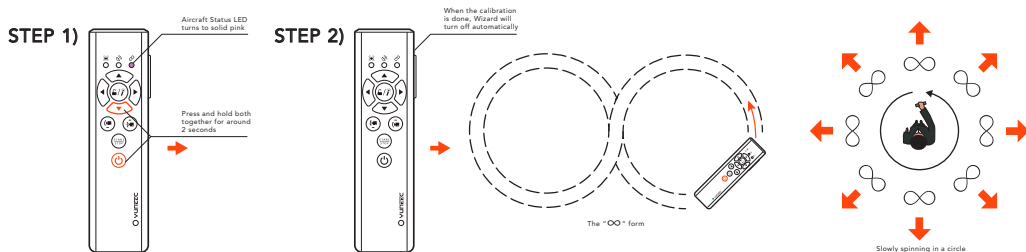
STEP 1) Entering the TYPHOON Wizard calibration mode

Press and hold both the Descend/ Backward Button and the Power Button at the same time for around 2 seconds till the top right Aircraft Status LED is solid pink. After that you can release both buttons. If entering the calibration mode fails, turn off the TYPHOON Wizard and try again.

STEP 2) Wizard Calibration

Immediately move the TYPHOON Wizard in the "∞" form while slowly spinning in a circle. When the calibration is done, Wizard will turn off automatically. The process will take around 30 seconds.

IMPORTANT NOTE: If calibration fails, the top left Aircraft Mode LED will be solid red and the power LED will blink red rapidly. You should turn off the Wizard and repeat the process from Step 1.



TIPS: Keep distance from magnetic interference during the calibration. We recommend calibrating Wizard outdoors. You can find the TYPHOON Wizard calibration tutorial video at www.yuneec.com/wiz-info.html